

PERRETT SIMPSON

Newsletter October 2017

2017 VICTORIAN ARCHITECTURE AWARDS



Regional Prize | Pomonal Community Hall | Workshop Architecture

The Australian Institute of Architects Awards program offers an opportunity for public awareness and peer recognition of the innovative work of our Victorian Architects. The 2017 Victorian Awards were announced on Friday 30 June at the Melbourne Exhibition and Convention Centre, and there were some outstanding projects on display.

Perrett Simpson have worked with many of the Architects that took out awards on the night and we would like to send out a big congratulations to all these companies, as well as everyone who was shortlisted in the various categories. We understand all the creativity and hard work that goes into these innovative projects, and these awards provide an avenue for Architects to display their efforts.

We would like to send out a special congratulations to **Workshop Architecture** for their community hall in Ararat (pictured) which won the Regional Prize, and a project that we were honoured to be the consulting engineers on.

EDUCATIONAL FACILITIES

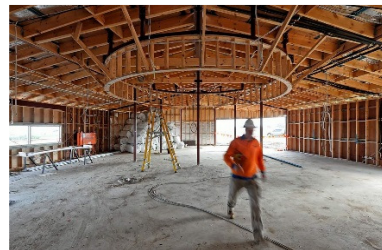


Whittlesea Secondary College

*Maddison Architects
(Completed)*

Echuca Schools Development

*Kneeler Design
(Under Construction)*



Yarrowonga College

*Kneeler Design
(Completed)*

Perrett Simpson are proud to have been the structural and civil consulting engineers for three recent school projects at Whittlesea, Echuca, and Yarrowonga. These new school buildings will provide significant and modern facilities to their respective local communities while serving the essential modern educational needs of our next generation of young professionals.

Perrett Simpson prides itself in its detailing and thoughtful documentation. We find educational facilities very rewarding work as not only are they innovative, substantial projects but also because they will be serving future generations, which will hopefully in turn produce a new crop of engineers and architects!

We are fortunate to have provided engineering services on a vast array of schools throughout Victoria and the above photos are just a few examples of the work that we have recently documented.

"I'm here to build something for the long-term. Anything else is a distraction."

Mark Zuckerberg, Facebook

CASE STUDY - SOUTH YARRA (COST EFFECTIVENESS)



This project is a major alterations and additions to a grand Melbourne mansion. The house required significant internal bracing steelwork to stabilise the existing 3 storey perimeter brick shell, (which is being kept for town planning reasons) and enabled the removal of all internal floors and cross walls. Propping has been designed in consultation with the builder and wherever possible, incorporates future permanent steelwork, to minimise the overall cost to the client and reduce total labour.